

CHECK VALVES

for pipeline installation, hydraulic pilot operated, p_{max.} 500 bar

Description:

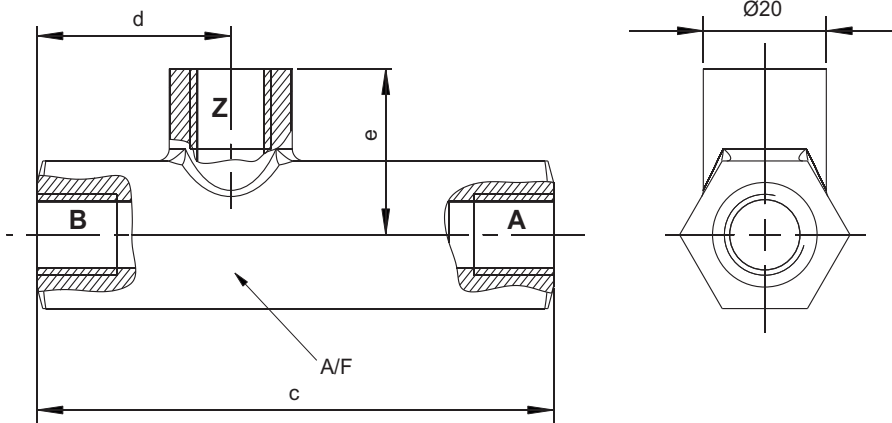
These hydraulic check valves are part of the shut-off valves according to DIN ISO 1219. With a hydraulic inlet in the connection Z the blocked flow A→B can be opened. The flow B→A is permanently open.

Pressure medium: Hydraulic oil 10 68 mm²/s, (ISO VG 10 to 68 according to DIN 51 519)

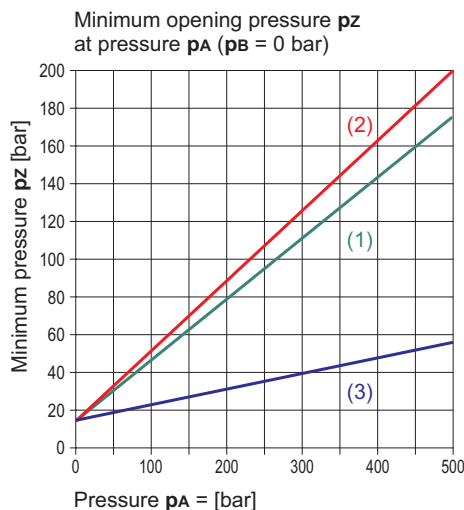
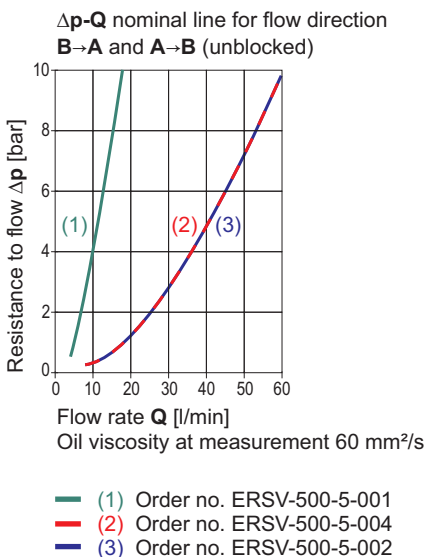
The check valves without pilot control feature a ball as a valve element.

The valve version with pilot control contains a spherical grinded valve piston with an integrated ball check valve. Already when opening the valve piston a throttle opening is released during the unlocking process. This dampens the pilot opening movement of the unlocking piston. Pressure surges in the load volume are suppressed by that.

The pilot control ensures a lower opening pressure which is suitable especially for swing clamp cylinders.

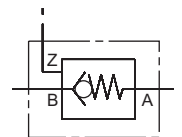


Type	Spring-loaded poppet valve, leakage free		
Connection	Pipeline	Pipeline	Pipeline
Installation position	any	any	any
Pilot control	without	without	with
Main passage A, B	G1/4	G1/2	G1/2
Control port Z	G1/4	G1/4	G1/4
Control volume [cm ³]	0,15	0,40	0,40
Operating pressure p _{max.} [bar]	500	500	500
Volume flow Q _{max.} [l/min]	15	55	55
c [mm]	84	100	100
d [mm]	31,5	36,5	36,5
e [mm]	27	31	31
A/F	24	32	32
Weight approx. [kg]	0,4	0,6	0,6
Order no.:	● ERSV-500-5-001	● ERSV-500-5-004	● ERSV-500-5-002



Web code: 070010

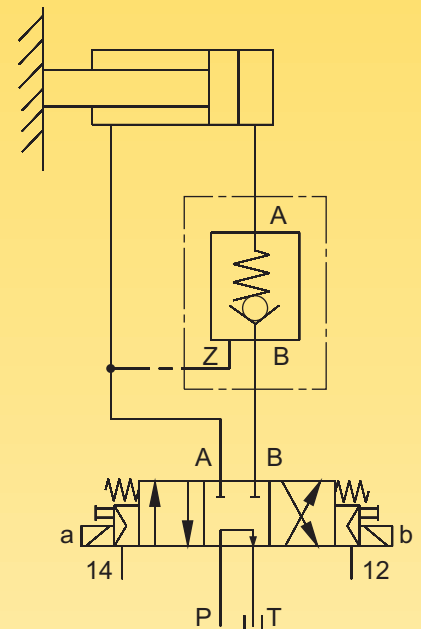
Other designs are available on request



Application:

The check valves serve for blocking the supply line in the application of hydraulic cylinders.

The check valve with pilot control is ideal for high operating pressure and high consumer volume.



HYDROKOMP®
Hydraulische Komponenten GmbH

Siemensstraße 16, 35325 Mücke (Germany)
Phone: +49 6401 225999-0
Fax: +49 6401 225999-50
E-mail: info@hydrokomp.de
Internet: www.hydrokomp.de